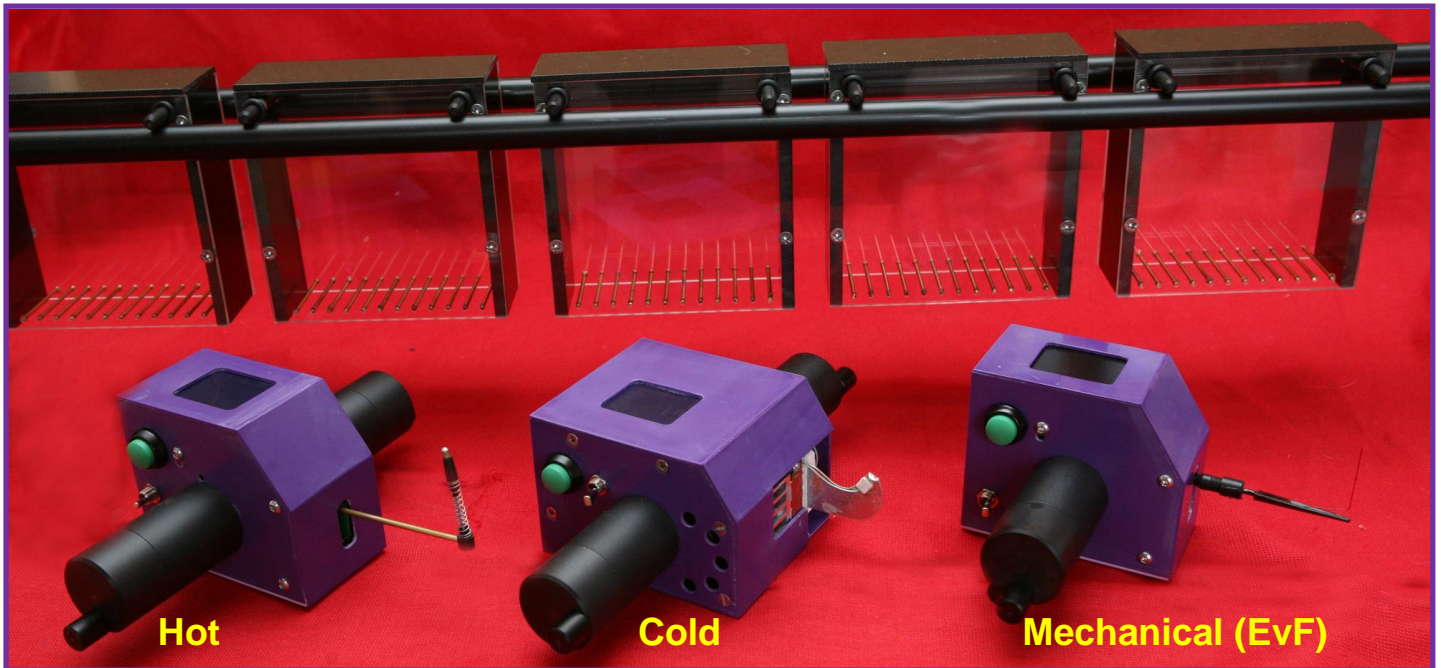




# Topcat Metrology Ltd



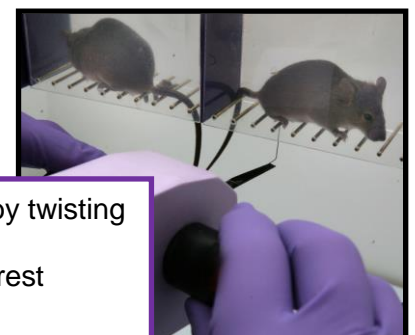
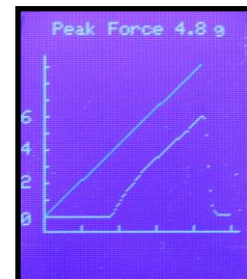
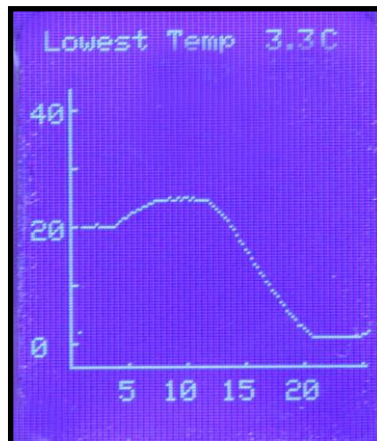
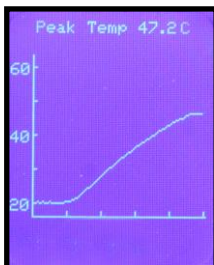
## MouseMet: One Acclimation Period, then THREE Nociceptive Tests



- 20°C to 65°C at 2.5°C/sec
- 2mm thermal probe
- Adjustable thermal cutout
- Flexible probe tip
- 1g application force

- 20°C to 0°C at 2°C/sec
- 1.5mm thermal tip
- Auto preheat to skin temp
- 1.5g application force

- Force range:0.1-7gf
- 0.3mm diameter tip
- Softstart probe to reduce touch-on responses
- Rate guide at 1g/sec



All three MouseMet transducers are operated simply by twisting the handles to bring the probe tip up to the foot. Height adjustable runs allow the operator's elbows to rest comfortably on the bench while testing. The system is available for both mice and rats.

*MouseMet Hot and Mechanical have been extensively validated and are in use all around the world. The pricelist and bibliography is available on request. MouseMet Cold is currently under validation at a number of sites and is available to pre-order.*

Directors: Dr PM Taylor +44 (0)7711 670058, Dr MJ Dixon +44 (0)7739 913696  
[www.mousemet.com](http://www.mousemet.com) email: mike@topcatmetrology.com  
 Registered Office: Gravel Head Farm, Downham Common, Little Downham, Ely, CAMBS, CB6 2TY  
 Registered Company No: 06547084 Vat No: 108 4374 22 EORI No: GB011 912 561 000