

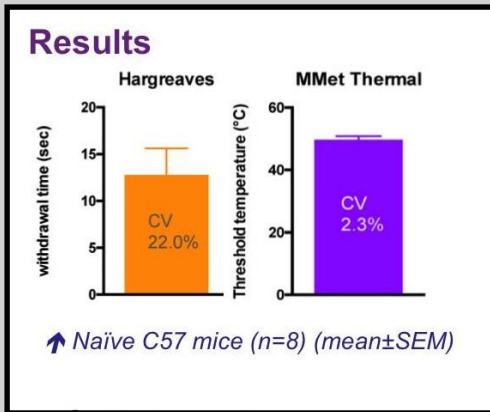
MouseMet Hot

Low-cost, high-precision ramped thermal stimulus designed specifically for mice and rats
Can be used in the same runs as MouseMet EvF, reducing acclimation time and stress

Covers the temperature range of the existing thermal latency tests for mice and rats

MouseMet Hot is a ramped thermal stimulus for mice and rats, working from ambient to 60°C. The probe ramps at a rate of 2.5°C/sec so the test result is a threshold temperature, rather than a time to react to a constant stimulus (a latency test).

In a comparison by the University of Queensland, MouseMet Hot provided comparable data with a Hargreaves system, but with much lower Coefficient of Variation and without the long acclimation time for the mice as the test could be performed in existing runs.



Fast and comfortable to use

MouseMet Hot is light (230g) and easy to hold, with big handles and a gentle, rotary action. It is suitable for use with most existing runs or with MouseMet runs. If used in conjunction with MouseMet EvF, this dramatically reduces the acclimation time and stress for the mice as the tests can be performed sequentially.

A test is started by bringing the probe into contact with the mouse's paw and twisting the handles. With elbows on the bench, this movement is intrinsically comfortable and stable, reducing fatigue over long testing sessions, and the low contact force (1g, adjustable) helps avoid "touch-on" responses.

At threshold, the probe is withdrawn from the foot, removing the stimulus and the green button pressed; the peak temperature is then displayed on the screen, along with a graph of the temperature ramp.

The probe is flexible, so hand tremor doesn't "scratch" the tip across the surface of the foot. This helps prevent "touch-on" responses

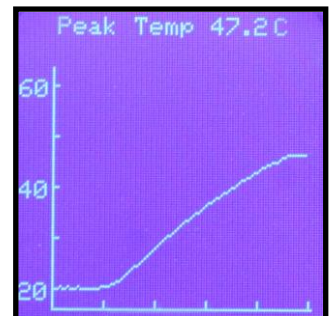
Our smallest thermal probe

The thermal probe is just 2.5mm diameter, making it easy to place on the plantar surface between the bars or mesh of the cage. The probe design is built on Topcat's 25 years experience of ramped thermal stimuli, in most common species (right up to camels).

The system includes a thermal cutout which can be set to the maximum temperature required by your protocol.

Prices (ex-works):

MouseMet Hot: £1350
2 runs and stand: £350



Prices and specifications subject to change without notice

Topcat Metrology Ltd

Directors: Dr PM Taylor +44 (0)7711 670058, Dr MJ Dixon +44 (0)7739 913696 mike@topcatmetrology.com
Registered Office: Gravel Head Farm, Downham Common, Little Downham, Ely, CAMBS, CB6 2TY
Registered Company No: 06547084 Vat No: 108 4374 22 EORI No: GB011 912 561 000